

Machine specifications

		VTC-20B	VTC-20C
Travel	X-axis	1120mm (44.09")	1660mm (65.35")
	Y-axis		510mm (20.07")
	Z-axis		510mm (20.07")
	Distance from table top to spindle nose	180mm - 690mm (7.09" - 27.16")	
	Distance from column front to spindle centre	550mm (21.65")	
Table	Table size	510mm x 1460mm (20.07" x 57.48")	510mm x 2000mm (20.07" x 78.74")
	Table surface configuration	5 x 18mm (0.71") T-slot, 100mm (3.94") pitch	
	Weight capacity	800kg	1000kg
Spindle	Spindle speed	40 - 7000rpm	
	Number of ranges	Stepless	
	Spindle bearing ID	70mm (2.75")	
	Spindle taper	7/24 taper No. 40	
	Spindle motor (5-min rating)	AC11kW {15HP}	
	Spindle motor (30-min rating)	AC7.5kW {10HP}	
	Spindle motor (cont. rating)	AC5.5kW {7.5HP}	
Feedrate	Rapid traverse rate (X/Y-axis)	24000mm/min (945 IPM)	
	Rapid traverse rate (Z-axis)	20000mm/min (787 IPM)	
	Cutting feedrate	1-5000mm/min (0.04 - 196.85IPM)	
Automatic Tool changer	Tool shank	CAT NO. 40	
	Retention stud	ANSI	
	Tool magazine capacity (option)	24	24 (2 x 24)
	Max. tool dia. [with adjacent pockets empty]	80mm (3.14") [110mm (4.33")]	
	Max. tool length	350mm (13.78")	
	Max. tool weight	8kg (17.64lbs)	
	Tool selection method	Random selection, shortest path	
	Tool change cycle (conforming to MAS)	Chip-to-chip 7.4 sec	Chip-to-chip 8.2 sec
Motors	Axis feed motor	X; 1kW (1.33HP). Y; 2kW (2.67HP). Z; 1kW (1.33HP)	
	Coolant pump motor	0.22kW (0.29HP)	
Power requirements	Electrical power supply	22.7kVA	
	Air supply pressure / volume (max)	5 - 7 bar/280l/min (10ft ³ /min)	
Tank capacity	Coolant tank capacity	300l (66 gal UK)	500l (110 gal UK)
Machine size	Height	2700mm (106.30")	
	Required floor space	See floor plan	
	Machine weight (including NC unit) approx.	5500kg (12100lbs)	8,500kg (18,700lbs)
Equivalent continuous sound Pressure level at operator position (dependant on equipment options)		less than 85dB(A)	

The accuracy data and other data presented in this publication were obtained under specific conditions and cannot be guaranteed to be repeated under different conditions (room temperature, workpiece material, tool material, cutting conditions, etc.)

EUROPEAN HEADQUARTERS & UK TECHNICAL CENTRE

YAMAZAKI MACHINERY UK LTD
Badgeworth Drive, Worcester, WR4 9NF, United Kingdom
Tel: (+44) 01905-755755 Fax: (+44) 01905-755001

OTHER EUROPEAN TECHNICAL CENTRES

YAMAZAKI MAZAK GMBH
Esslinger Straße 4-6, D-73037 Göppingen, Germany
Tel: (+49) 07161-6750 Fax: (+49) 07161-26158 Telex: 72 76 53

YAMAZAKI MAZAK DANMARK A/S
Odinsvej 7, 4100 Ringsted, Denmark
Tel: (+45) 53 61 62 62 Fax: (+45) 53 61 51 51

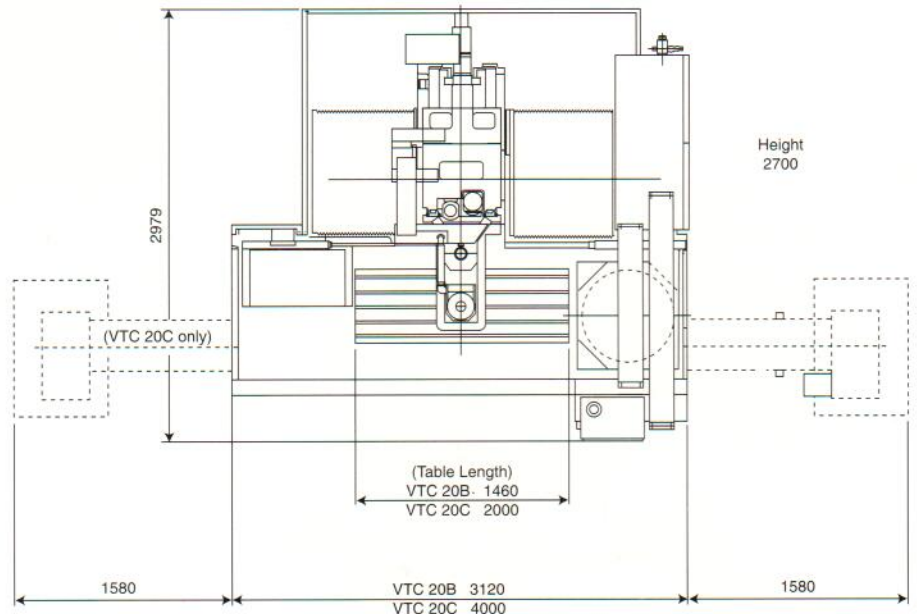
YAMAZAKI MAZAK EUROPE N.V.
Research Park, Grauwmeer 7, 3001 Leuven, Belgium
Tel: (+32) 016-39 16 11 Fax: (+32) 016-40 01 96 Telex: 62552 Mazak B

YAMAZAKI MAZAK FRANCE SA
10, avenue Lionel Terray, ZI de Courtaboeuf-Villejust,
91943 LES ULIS Cedex, FRANCE
Tel: (+33) 0169-31 81 00 Fax: (+33) 0169-31 81 01

YAMAZAKI MAZAK ITALIA S.r.l.
Via J.F. Kennedy, nr. 16, 20023 Cerro Maggiore (MILANO), Italy
Tel: (+39) 0331-575800 Fax: (+39) 0331-575859

WORLD HEADQUARTERS

YAMAZAKI MAZAK CORPORATION
1 Norifune, Oguchi-Cho, Niwa-Gun, Aichi-Pref., Japan
Tel: (+81) 0587-95-1131 Fax: (+81) 0587-95-2717 Telex: J 59777
Cable address: "Mazak" Nagoya Japan



Specifications are subject to change without notice.
This product is subject to all applicable export control laws and regulations.

